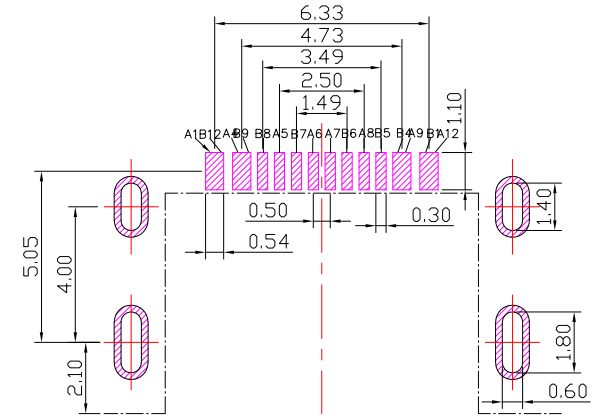
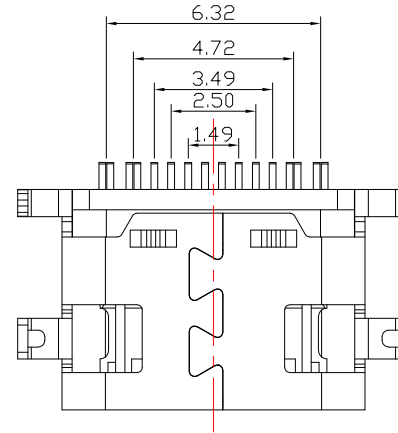
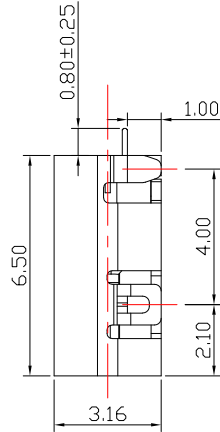
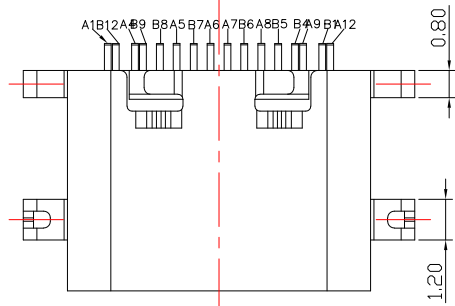
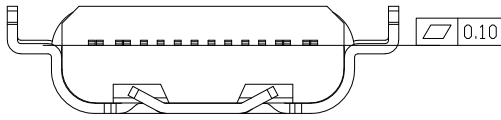




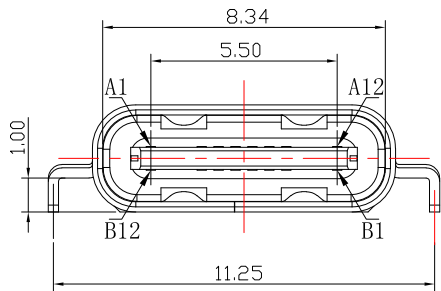
SBC-160M1-20x-S338

鍍層厚度:

Blank : 1u"
2 : 15u"
3 : 30u"



PCB LAYOUT



A1	GND	B12	GND
A2		B11	
A3		B10	
A4	VBUS	B9	VBUS
A5	CC1	B8	SBU 2
A6	D+	B7	D-
A7	D-	B6	D+
A8	SBU1	B5	CC 2
A9	VBUS	B4	VBUS
A10		B3	
A11		B2	
A12	GND	B1	GND

SPECIFICATIONS

Electrical:

- 1.Rating: 20V , 5.0 A
- 2.Dielectric Withstand Voltage: 100V AC
- 3.Contact Resistance: 40 mΩ Max
- 4.Insulation Resistance: 100 MΩ Min

Mechanical:

- 1.Connector Mate and Unmate Force
 - 1.1 Mate force: 5~20 N
 - 1.2 Unmate force: 8~20 N

Material:

- 1.Housing: PA9T
- 2.Contact: C7025
- 3.Shell: SUS

Finish:

- 1.Contact: Plated Gold in Mating Area ;
Tin Plated on Solder Balls ;
Nickel under plated overall
- 2.Shell: Nickel under Plated surface layer

CONTACT 建倚科技股份有限公司
CONTACT TECHNOLOGY CORP.

TOLERANCE UNLESS OTHERWISE STATED :
Up to 5 ±0.2
Above 5 ~ 15 ±0.3
Above 15 ~ 30 ±0.4
Above 30 ~ 50 ±0.5
Angle ±0.3

3RD. ANGEL'S



UNITS MM

DRAWN BY:	DATE	MATL	TITLE	CONNECTOR
Jack Lu	08/01/24			
CHECKED BY:	DATE	FINISH	MODLE	USB TYPE C 2.0 沉板 板上H2.16mm
Jacky Chen	08/01/24			
APPROVED BY:	DATE	SCALE	DWG NO.	SBC-160M1-20x-S338
Tony Kao	08/01/24	1 : 1		
		SHEET NO.	PART NO.	SBC-160M1-20x-S338
		1 of 1		
				SIZE A4
				VER R1

1	更新圖面	Jack	080124
ITEM NO.	DESCRIPTION	DRAWN	DATE